

## Introduction:

The Council has prepared a draft Public Realm Plan for the centre of Chorlton. This is part of the Council's work to improve and invest in district centres across the city.

This Public Realm Plan looks at the streets and public spaces. It includes design principles and priorities for improvement.

The plan looks in more detail at three 'Focus Areas' that are highly visible and owned by the Council.

Our goal is to create a more pleasant and welcoming environment for residents and visitors. We also want the plan to support local shops, cafés and restaurants and be flexible for the future.

## Today's Consultation:

The display boards here today provide a summary of the Public Realm Plan. The full document can be viewed online at [www.manchester.gov.uk/consultations](http://www.manchester.gov.uk/consultations)

Please look at the information on display here and online, and let us know what you think – the final display board tells you how to do this.



▲ Focus Area 1:  
Chorlton Library to Nicolas Road



▲ Focus Area 2:  
Four Banks



▲ Focus Area 3:  
High Lane Junction

## 'Social Infrastructure'...

Work is also being done to consider 'social infrastructure' in Chorlton.

This will look at schools, health, and community based services. It will also look at what will be needed in the future as Chorlton grows. We will consult on and publish the findings at a later date.

## Potential Public Realm Improvements:

This illustrative wide plan demonstrates the variety of public realm improvements that could be implemented throughout Chorlton's Centre.

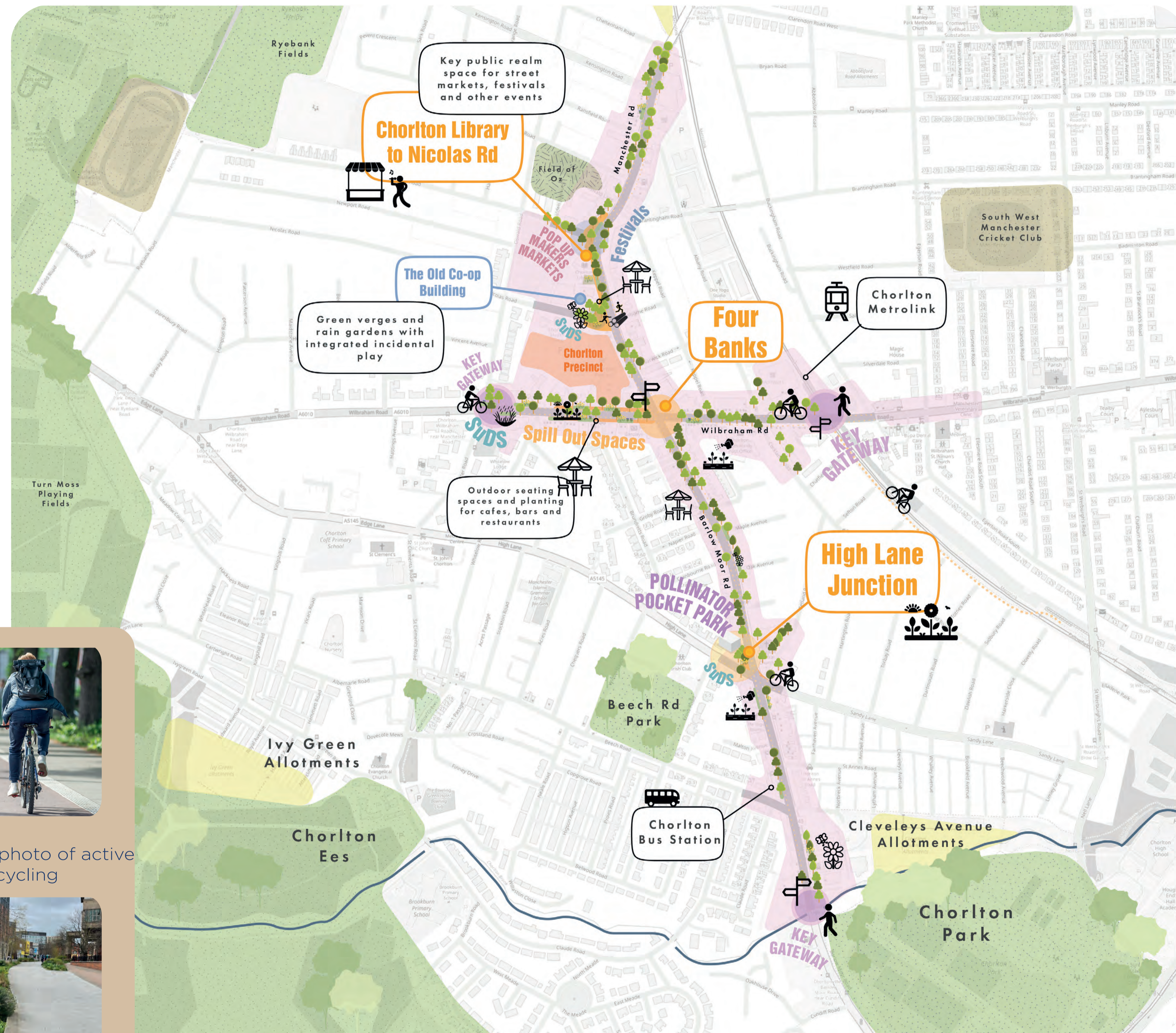
All of these improvements would be subject to identification of funding, further design and consultation.

### Potential Centre-wide Improvements

- New street trees
- New planted verges
- De-clutter the streetscape
- New community planters
- Rain gardens and swales (SuDS)

### Key Gateway: Fallowfield Loop

- Improve pedestrian and cycle connection to the Fallowfield Loop
- Better wayfinding/signage
- Additional or improved litter bins and seating



Example of potential features that could be included in Chorlton's Public Realm

## 'Active Travel'... what this means

When we use the term active travel, we mean walking, wheeling and cycling. It is an integral part of how Manchester will create a zero carbon, liveable city, with clean air, pleasant streets and environment in which active travel is an enjoyable, natural choice for everyday journeys.



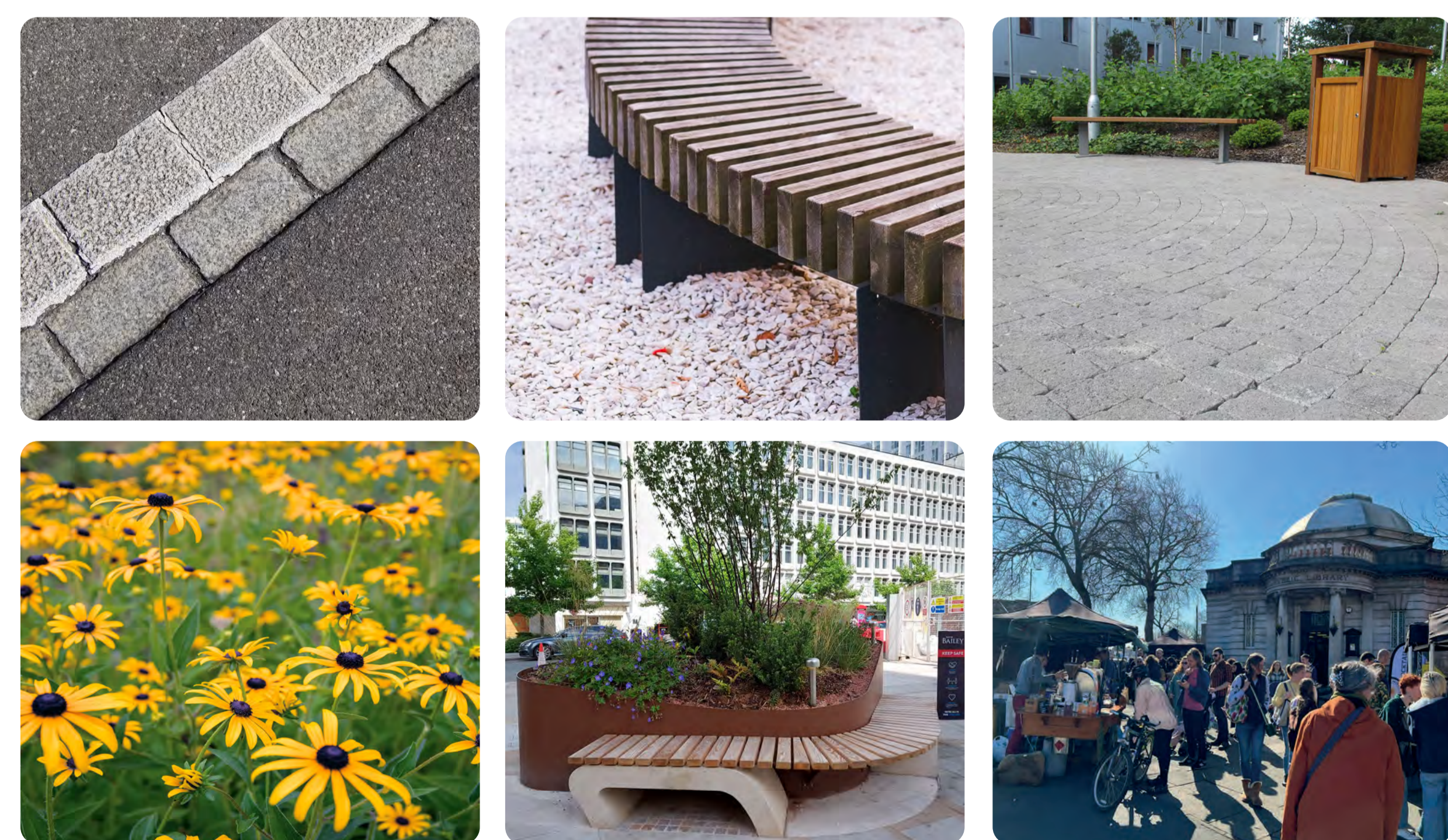
Example photo of active travel as cycling

## 'SuDS' ... what this means

Sustainable drainage systems (SuDS) are a way of draining surface water as an alternative to using networks of pipes and sewers. By mimicking natural drainage processes, SuDS aim to reduce surface water flooding, improve water quality and enhance the amenity and biodiversity value of the environment.



Example photo of SuDS systems



### Potential Public Realm Improvements:

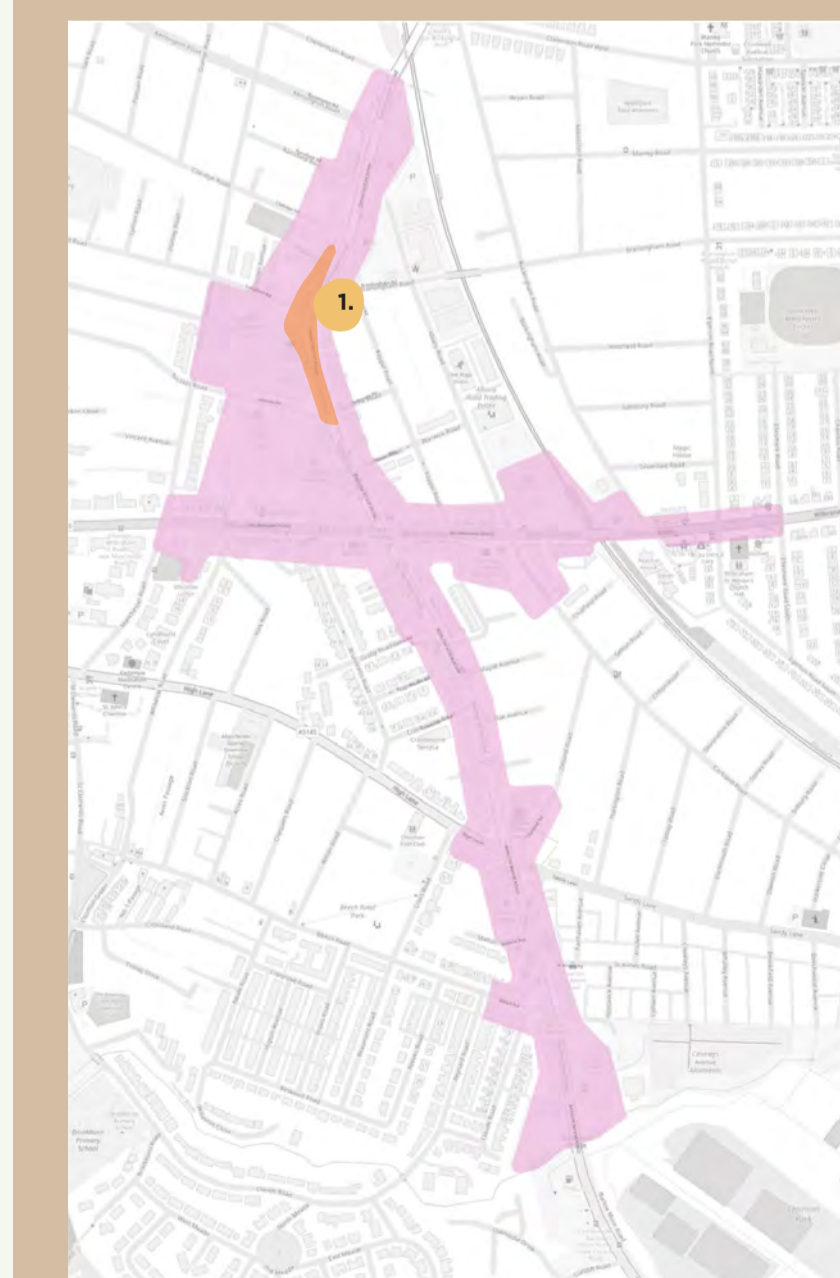
#### Focus Area 1 - Chorlton Library to Nicolas Road

This area has the potential to become large, usable community space through the new paving, greenery and dwell spaces.

As an area that is currently used by the community, public realm enhancements aim to create an inviting, age-friendly and active space for everyone to use.

- Incidental play spaces
- Pop-up space opportunities to host markets, events and community activity
- Pollinator-friendly planted verges with habitat boxes
- Formalised paving to define and enhance the space and its uses
- Seating areas and dwell spaces to create an inviting area to spend time
- New tree planting to replace dead/dying trees and enhance the space
- There could be options in the future to close off Longford Rd or Nicolas Rd to maximise the opportunity to create a larger, usable space. Any such closures could be temporary or permanent. Options would include filters, raised tables or temporary closures.

### Chorlton Study Area



What do you think of the proposals for this space?

Do you have any other suggestions for this space?

▲ Example of potential features that could be included in Chorlton's Public Realm



**Potential Public Realm Improvements:**

**Focus Area 2 - Four Banks**

The Public Realm Plan seeks to improve the attractiveness of this key gateway. It does not propose any changes to the layout of the new Bee Network cycleway.

- The installation of new paving to enhance the experience and define the different uses along the street
- Pollinator-friendly planting with habitat boxes
- Areas for parking, dwelling, and active travel
- Defined spaces for spillover activities from local businesses
- Improved surfaces
- Age-friendly street furniture
- Green verges
- New public art and signage

**Focus Area 3 - High Lane Junction**

Focus Area 3 can provide a pocket park for those travelling to or through the area.

Improvements could include:

- Rain garden with pollinator-friendly planting
- Seating and incidental play
- New planters in front of commercial premises
- Public art including wall murals
- Small dwell spaces
- Planting softens this area and creates a pleasant thoroughfare for people walking or cycling



What do you think of the proposals for this space?

Do you have any other suggestions for this space?

## Getting around Chorlton:

The Public Realm Plan looks at how people travel to and from Chorlton, and how people get around the centre of Chorlton.

### Walking

The centre of Chorlton is very accessible and well connected to neighbouring areas for people on foot. The Public Realm Plan aims to encourage people to walk to and around the area safely, with new places to sit and dwell.

### Cycling

The new cycleway has improved north to south connections for cyclists. The Public Realm Plan has identified opportunities to improve connections with the Bee Network and the Fallowfield Loop - this could include additional signage and surface markings.

### Accessibility and 'wheeling'

Many people use buggies, wheelchairs and other mobility aids to get around Chorlton. The plan aims to make this easier, creating a more accessible centre.

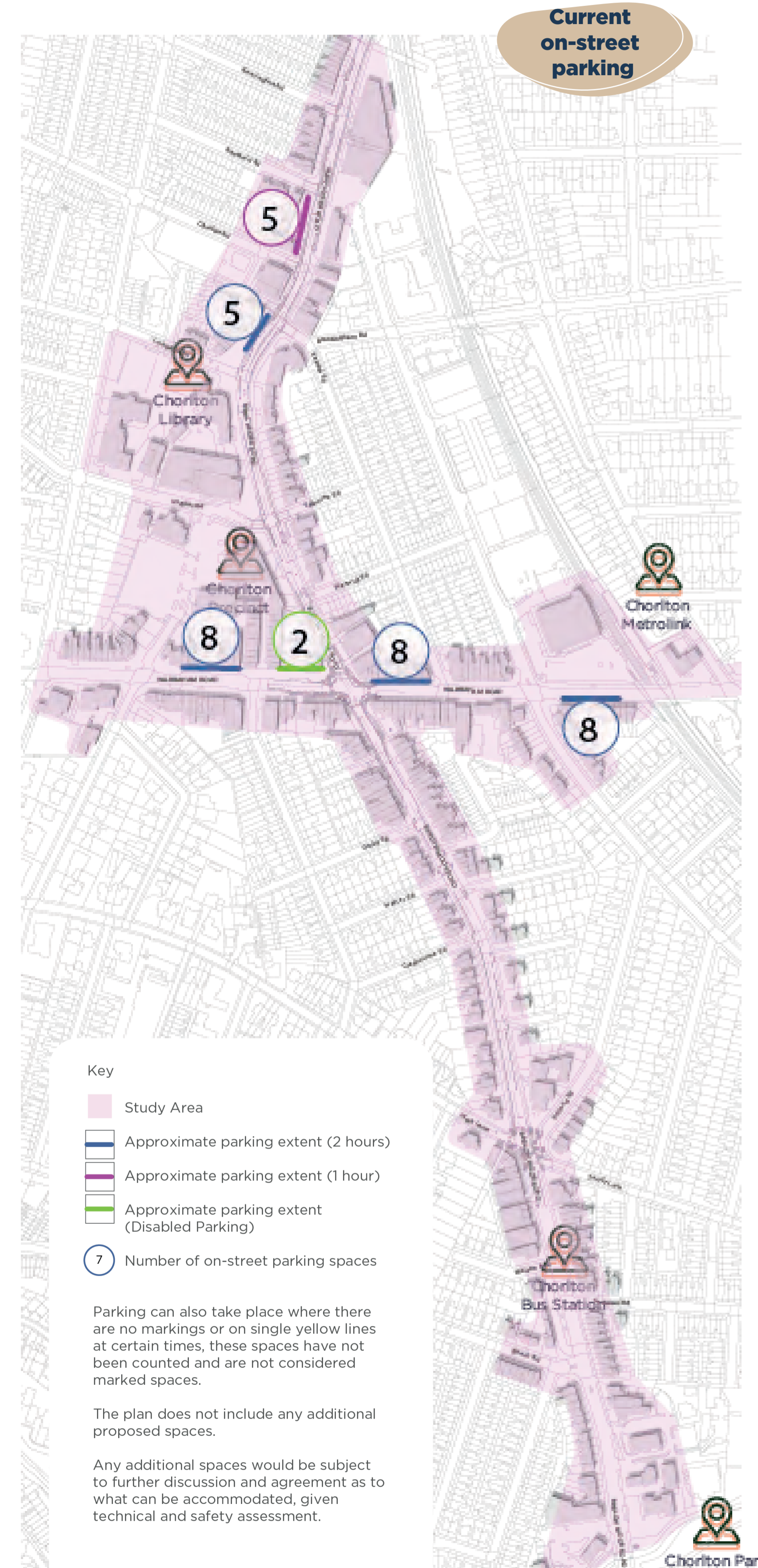
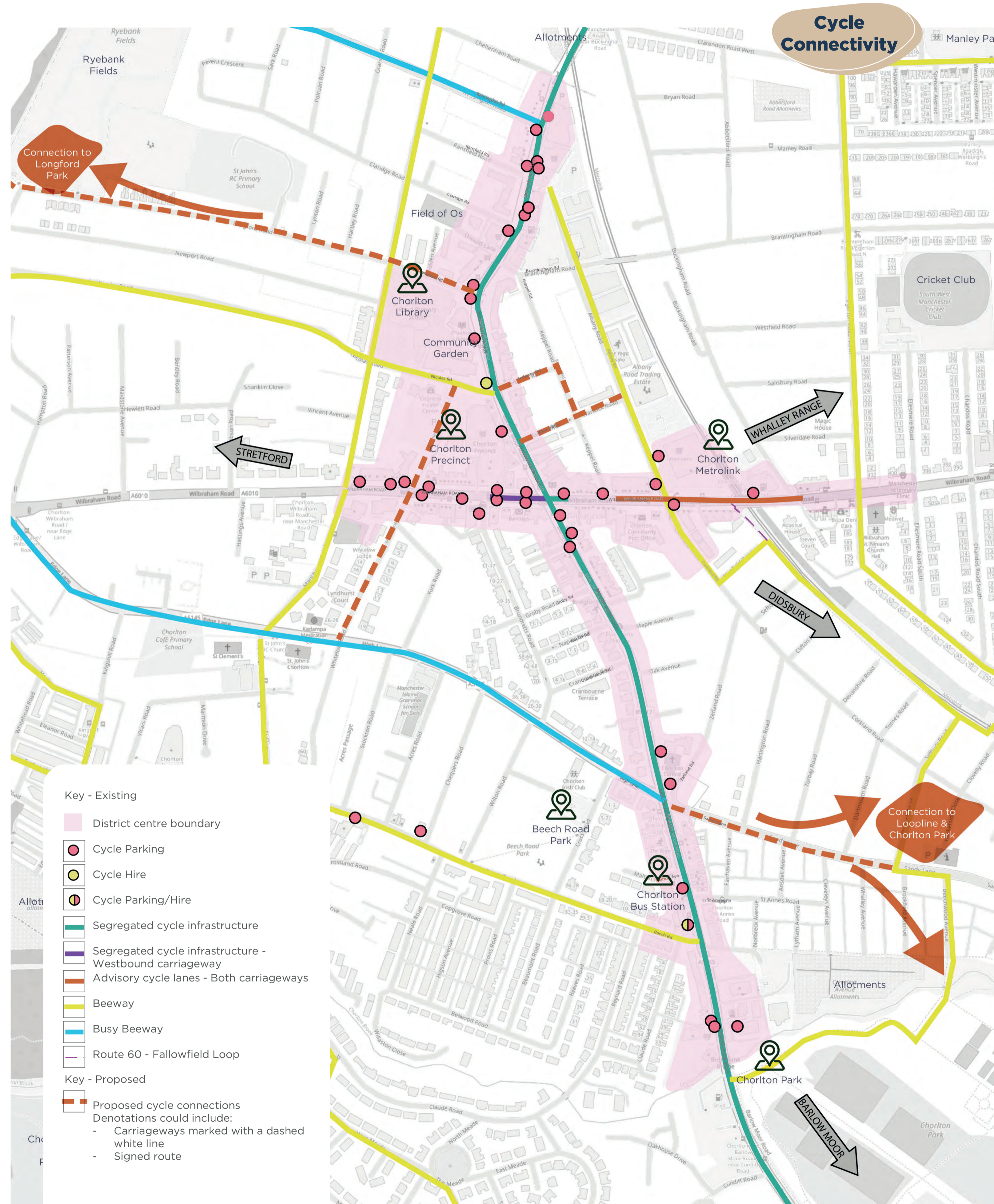
### Car parking

There are currently 36 marked on-street parking spaces available, including two disabled bays. It may be possible to add more on-street parking spaces, including disabled spaces, in some locations - this is being looked at.

The car park behind the Precinct is privately owned and is part of the site that will be developed at a future date. This will be subject to a planning application made by the developer.

### Buses

There are already frequent bus services running through Chorlton. The plan does not propose any changes to these, and the Council will work with Transport for Greater Manchester (TfGM) to make sure the bus services continue to run efficiently. We will also look at whether more or better bus shelters can be provided at bus stops.



Parking can also take place where there are no markings or on single yellow lines at certain times, these spaces have not been counted and are not considered marked spaces.

The plan does not include any additional proposed spaces.

Any additional spaces would be subject to further discussion and agreement as to what can be accommodated, given technical and safety assessment.

**There are a number of ways you can get involved and have your say on these draft plans:**

1. You can fill out the online questionnaire using the link or QR code below:

**[www.manchester.gov.uk/info/200024/consultations\\_and\\_surveys](http://www.manchester.gov.uk/info/200024/consultations_and_surveys)**



2. If you would prefer a **paper questionnaire** please ask one of the staff at this event
3. You can also email comments to **[district.centres@manchester.gov.uk](mailto:district.centres@manchester.gov.uk)**

**The consultation runs until 25th March.**

### **What next?**

Once the consultation period ends, we will assess the feedback we have received and consider how the plan could be amended to address the comments and suggestions provided.

The final draft of the plan will then go to Manchester City Council's Executive to be endorsed, and it will then be published on the Council's website.

